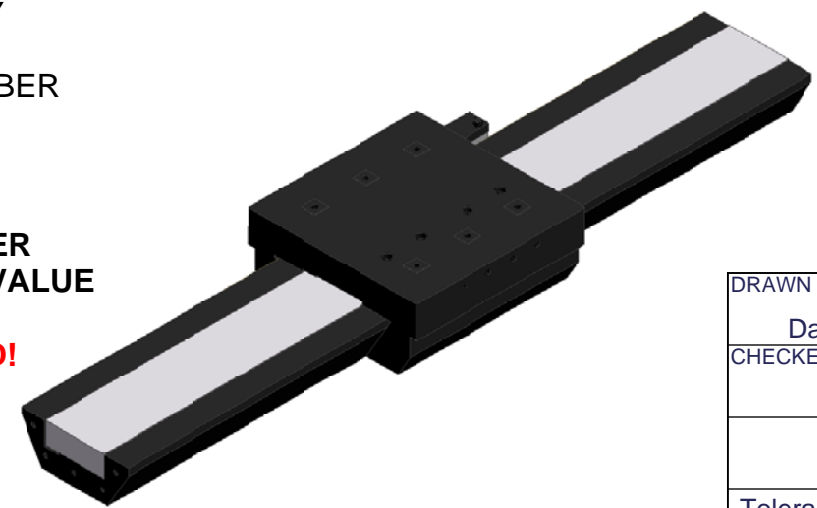


SLIDE TRAVEL*	OVER ALL LENGTH
100mm	310mm
200mm	410mm
400mm	610mm
600mm	815mm

LENGTHS AVAILABLE TO GREATER THAN 2 METERS, PLEASE CONSULT FACTORY

\* REPRESENTS "XYZ" IN THE PART NUMBER



**AIR QUALITY**  
 AIR SUPPLY MUST BE FREE OF CONTAMINANTS AND MOISTURE. FILTERED AIR SUPPLY TO ISO 8573.1 QUALITY CLASS 3

**CLASS: 3 (RECOMMENDED)**  
 DIRT: 5 MICRON PARTICAL SIZE OR SMALLER  
 WATER: -4 F, PRESSURE DEWPOINT (128 ppm. vol.) AT 100 psig  
 OIL: 1.0 mg/m\*\*3 (INCLUDING VAPOR)

**CLASS: 4 (MINIMUM)**  
 DIRT: 15 MICRON PARTICAL SIZE OR SMALLER  
 WATER: +37.4 F, PRESSURE DEWPOINT (940 ppm. vol.) AT 100 psig  
 OIL: 5 mg/m\*\*3 (INCLUDING VAPOR)

**STANDARD FEATURES**  
 MOTOR: 200 N FORCE LINEAR MOTOR  
 INCLUDES: DIGITAL HALL EFFECT DEVICE  
 THERMISTOR, THERMOSTAT, HIGH FLEX CABLE  
 STANDARD TRAVEL: 100, 200, 400 AND 600mm  
 LONG TRAVEL: >2 METER TRAVEL AVAILABLE  
 SPEED: >1 meter/second  
 (ENCODER RESOLUTION AND COUNTER CLOCK FREQUENCY DEPENDANT)  
 ENCODER OUTPUT: ANALOG 1 Vp-p (STANDARD)  
 OPTIONAL: 5um, 1um, 0.5um, 0.1um, 50nm, 20nm, 10nm or 5nm USING 4096 INTERPOLATION (NOTE 1.)  
 SYSTEM REPEATABILITY: +/- 1 ENCODER COUNT (NOTE 1.)  
 HOME SENSOR: STANDARD  
 BEARINGS: PRECISION AIR BEARING  
 REFER TO AIR PURITY SPECIFICATION  
 OPERATING PRESSURE: 60 PSIG TO 80 PSIG, 120 PSIG Max.  
 MAXIMUM LOAD RATING: 750N (@ 60 psig)  
 HORIZONTAL STRAIGHTNESS: 5 micro-inch /inch  
 VERTICAL STRAIGHTNESS: 5 micro-inch /inch  
 HORIZONTAL STIFFNESS: >1,000,000 lbs/in  
 VERTICAL STIFFNESS: >1,000,000 lbs/in  
 ENCLOSURES: ALUMINUM  
 ATMOSPHERES: STANDARD & CLEAN ROOM  
 TEMPERATURE: 10 to 35 DEG C  
 HUMIDITY: 10% to 80% NON-CONDENSING

**NOTE 1 - FOR OPTIMAL AXIS PERFORMANCE, ALIO RECOMMENDS THE USAGE OF A DELTA TAU PMAC2A-PC/104 CONTROLLER WITH THE DELTA TAU ACCESSORY ACC-51S: 4096x SINUSOIDAL INTERPOLATOR.**

**ACCESSORIES**  
 MOTOR AMPLIFIER

**OPTIONAL EQUIPMENT**  
 MOTION CONTROLLERS  
 ENCODER INTERPOLATION, DESCRETE VALUE

CUSTOM DESIGNS FOR OEM INTEGRATION

USE IN-LINE PRESSURE SWITCH TO KILL MOTOR POWER IF AIR PRESSURE DROPS BELOW RATED OPERATING VALUE

**DO NOT OPERATE UNLESS AIR PRESSURE IS APPLIED!**

ALIO INDUSTRIES  
 11919 W I-70 FRONTAGE ROAD NORTH, UNIT 119  
 WHEAT RIDGE, COLORADO 80033 USA  
 (T) 303-339-7500 www.alioindustries.com

**ALIO INDUSTRIES PROPRIETARY INFORMATION**

DRAWN Dan Crews 3/9/2005				
CHECKED				
Tolerances: x.x ± .04 in x.xx ± .02 in x.xxx ± .005 in		TITLE <b>STAGE - LINEAR AIR BEARING, HIGH FORCE</b>		
MATERIAL		SIZE B	DWG NO <b>AI-L12-(XYZ)00-AB</b>	REV
SCALE		SHEET 1 OF 1		